

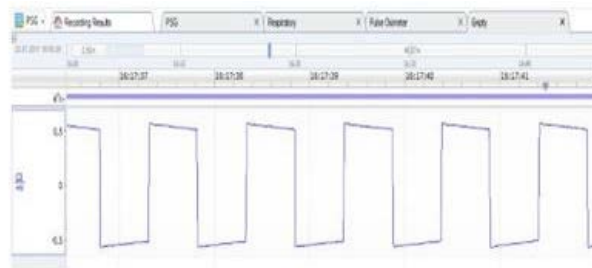
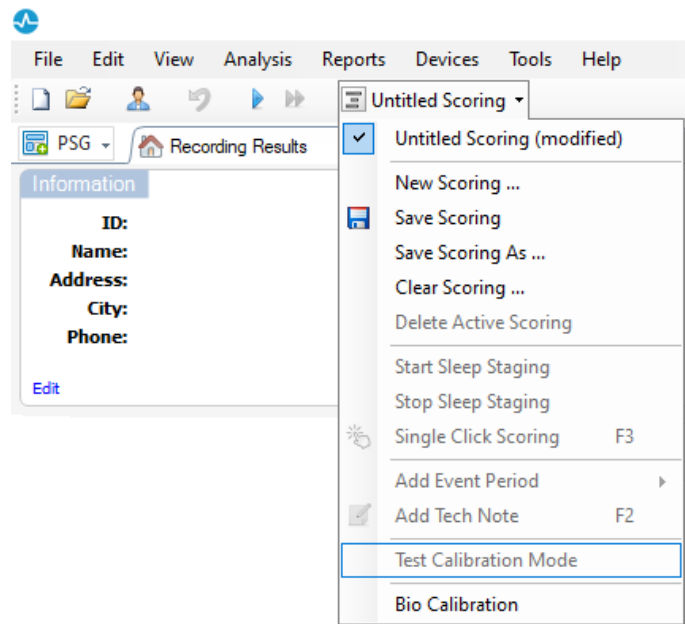
HOW TO PERFORM AN EEG CALIBRATION TEST

It is advised to run the EEG calibration test on the first shift of every month.

1. Run EEG signal testing

Open Noxturnal and start a recording. Click on the “**untitled scoring**” drop down menu and select “**Test Calibration Mode**”.

All channels will receive a 500µV circuit and generate a square wave. To better view the wave, use the unfiltered and non-referenced signal, for example, C3 instead of C3-M2.



2. Calibration Test Log Book

To document the EEG calibration test, take a screenshot of the signal generated and save in your Calibration Test Log Book with the date of when the test was performed.