

1 Selection of Measurement Site – What to consider?



1. Skin Integrity

2. Degree of Perfusion

3. Patient Clinical Picture



2 Check Monitor Readiness and Sensor Condition before Use



When ON, an AUTOMATIC calibration will begin

READY FOR USE – Verify system readiness

Check the appropriate settings are displayed:
Monitoring Time (6, 8 or 12hrs) + Sensor Temp (42)

When removing the sensor from the Docking Station, check the condition of its membrane before applying it to the patient. It should look like a clear shiny film, bubble and wrinkle free. Change membrane if necessary.

3 Sensor Application

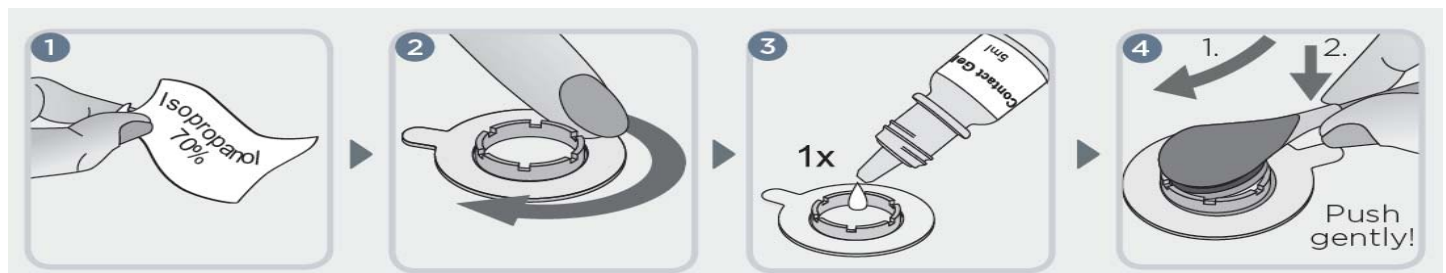


Verify system readiness **READY FOR USE**

- 1 Clean site with 70% Isopropyl Alcohol. Let the site dry.
- 2 Attach the ring to selected site
- 3 Apply **ONE** drop of contact gel in the centre of the attachment ring
- 4 Holding the sensor at its neck, first insert the nose of the sensor into the ring. Click in the sensor by applying a slight downward pressure to the neck. Rotate the sensor in the ring to distribute the contact gel evenly. Gently press on the sensor as a final application check.

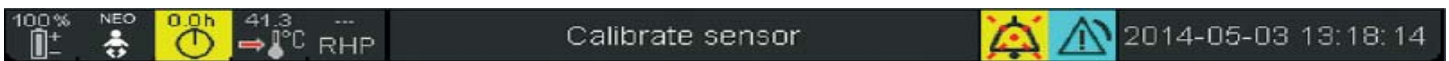
Start monitoring! Refer to online video “Sensor Application” www.sentec.com/tv/v2

*** If the patient needs to move positions, there is no need to remove the probe from the patient. Simply disconnect the cable at the detachment point and reconnect it within 30 minutes – no need to re-calibrate sensor!



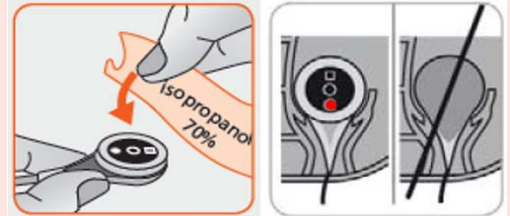
4 Patient Monitoring – What to look out for?

- The monitor will start gently heating the site. When stabilising, the reading will be displayed in a faint **GREY** before displaying an **ACCURATE** CO₂ reading in **GREEN** (2-10 minutes).
- **NOTE:** If interfacing the SenTec with Sleep PSG Software, the reading will NOT display on your PSG recording screen until the CO₂ reading is stabilised and displaying in **GREEN**.
- *Site time* – Once site time has elapsed; the message **Calibrate sensor** displays and your CO₂ reading will no longer be available. Return the probe to the docking station (**CLEAN PROBE** with 70% Isopropyl first) for **AUTOMATIC** re-calibration and to reset the site time/available monitoring time.
- Re-attach sensor to new site when system is **READY FOR USE**



5 Sensor Removal – End of Monitoring

- When monitoring is completed/site time has elapsed, remove the sensor from patient.
- Clean Sensor and Docking Station with 70% Isopropyl Alcohol ONLY.
- Check condition of membrane after use. Change membrane if necessary.
- Place the sensor in the docking station door, **RED light facing out** and gently close door. Store sensor in Docking Station when not in use.



Change Membrane Sensor (if required)

- If the sensor membrane has expired, damaged or missing, or there is trapped air or dry contact gel under the membrane (membrane looks cloudy), the sensor membrane must be changed before use.
- Refer to online video “Refilling the Membrane Changer” www.sentec.com/tv/v1
- Refer to online video “Changing the Sensor Membrane” www.sentec.com/tv/v0

