

sentec

QUICK REFERENCE GUIDE

Continuous non-invasive CO₂ Monitoring

Temple Healthcare Pty Ltd
 PO Box 756, Mittagong, NSW 2575
 Email: info@templehealthcare.com.au
 Web: www.templehealthcare.com.au
 Phone:1300 162 694 Fax:02 8458 0700

1 Selection of Measurement Site – What to consider?

1 Skin Integrity

2 Perfusion at site

3 Patient Clinical Picture

● Sensor application area **1 best** **2 good** **3 fair**

2 Check Monitor Readiness and Sensor Condition before Use

When ON, an AUTOMATIC calibration will begin

READY FOR USE – Verify system readiness

Check the appropriate settings are displayed:
Monitoring Time + membrane status

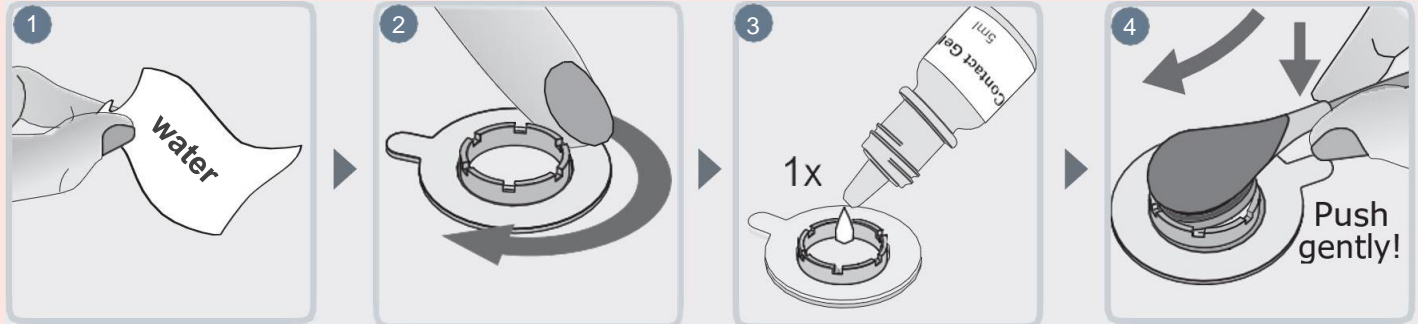
	Site	Sensor	
	Neonatal time	temperature	
	↓	↓	↓
	88%	NEO	4.0h
	+		42.0
			°C

When removing the sensor from the Docking Station, check the condition of its membrane before applying it to the patient. It should look like a clear shiny film, bubble and wrinkle free. Change membrane if necessary.

Please turn over

3 Sensor Application

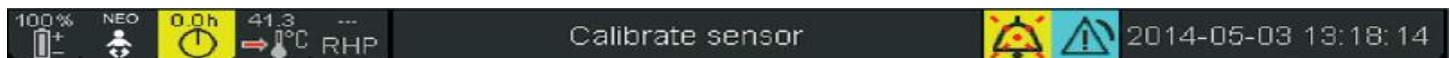
- 1 Clean site with gauze and water and let the site dry
- 2 Attach the ring to selected site – check the attachment ring is flat on the skin
- 3 Apply **ONE** drop of contact gel in the centre of the attachment ring
- 4 Holding the sensor at its neck, first insert the nose of the sensor into the ring
Click in the sensor by applying a slight downward pressure to the neck
Rotate the sensor in the ring to distribute the contact gel evenly
Gently press on the sensor as a final application check



*** If you need to reorganize the cot, there is no need to remove the sensor from the baby. Simply disconnect the cable attachment and reconnect it within 30 minutes – no need to re-calibrate sensor!

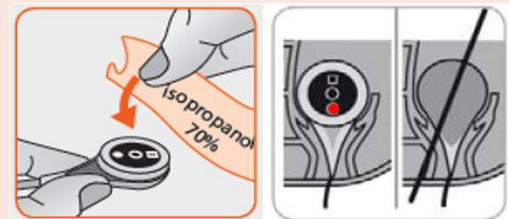
4 Patient Monitoring – What to look out for?

- The monitor will start gently heating the site. When stabilising, the reading will be displayed in a faint **GREY** before displaying an **ACCURATE** CO₂ reading in **GREEN** (2-10 minutes).
- *Site time* – Once site time has elapsed; the monitor displays the message **Calibrate sensor** and your CO₂ reading will no longer be available. Return the probe to the docking station (**CLEAN PROBE** with 70% Isopropyl first) for **AUTOMATIC** re-calibration and to reset the site time/available monitoring time.
- Re-attach sensor to new site when system is **READY FOR USE**



5 Sensor Removal – End of Monitoring

- When monitoring is completed/site time has elapsed, remove the sensor from patient
- Clean Sensor and Docking Station with 70% Isopropyl Alcohol **ONLY**.
- Check condition of membrane after use. Change membrane if necessary.
- Place the sensor in the docking station door, **RED light facing out** and gently close door.
Store sensor in Docking Station when not in use.



- ❖ If leaving the attachment ring on the patient for future use, clean the inside of the attachment ring with a cotton bud and water to remove all contact gel.

***Do **NOT** use **chlorhexidine** to clean the sensor, docking station or patient skin prior to sensor application. Use wipes that are 70% isopropanol **ONLY**.