

HOW TO ATTACH DOCUMENTS

1. Open Study

Open Noxturnal >>> Library >>> Open the study you wish to attach a document to

2. Recording Properties

Select the Recording Properties icon within the study.



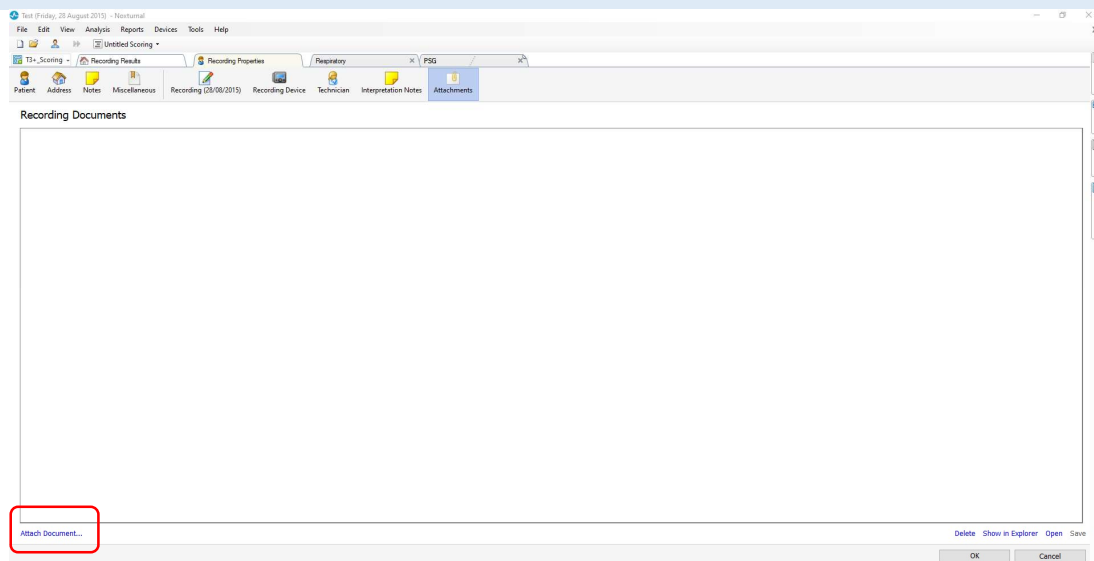
3. Attachments

Select the Attachments icon within the Recording Properties Tab



4. Attach Document

Select the Attach Document icon in the bottom left corner of the window



5. Browse

Browse for the documents you wish to attach and select Open.

Once you have attached your required documents, select OK in the bottom right corner of the window to SAVE changes.

