

HOW TO

INSTALL NOXTURNAL AND SAMPLE STUDY

1. Download and Install Noxturnal

On the Temple Healthcare website, there will be a download link for the most up to date version of Noxturnal.

<https://www.templehealthcare.com.au/noxturnal-software/>

Password: Templecare

Download Noxturnal 6.2.2.31544 – *For use in Ambulatory Sleep Studies (297MB)*

Run the .exe file and follow the prompts accordingly.

Noxturnal is required for device configuration, device data download, data analysis and reporting.

Note: Noxturnal Software is licence-free and can be downloaded free of charge via the link provided.

2. Download Sample Study

On the Temple Healthcare website, in the same location as above, there will be a download link for a sample sleep study.

Download Sample Study – Full PSG with Video for training and self-learning (3.9GB).

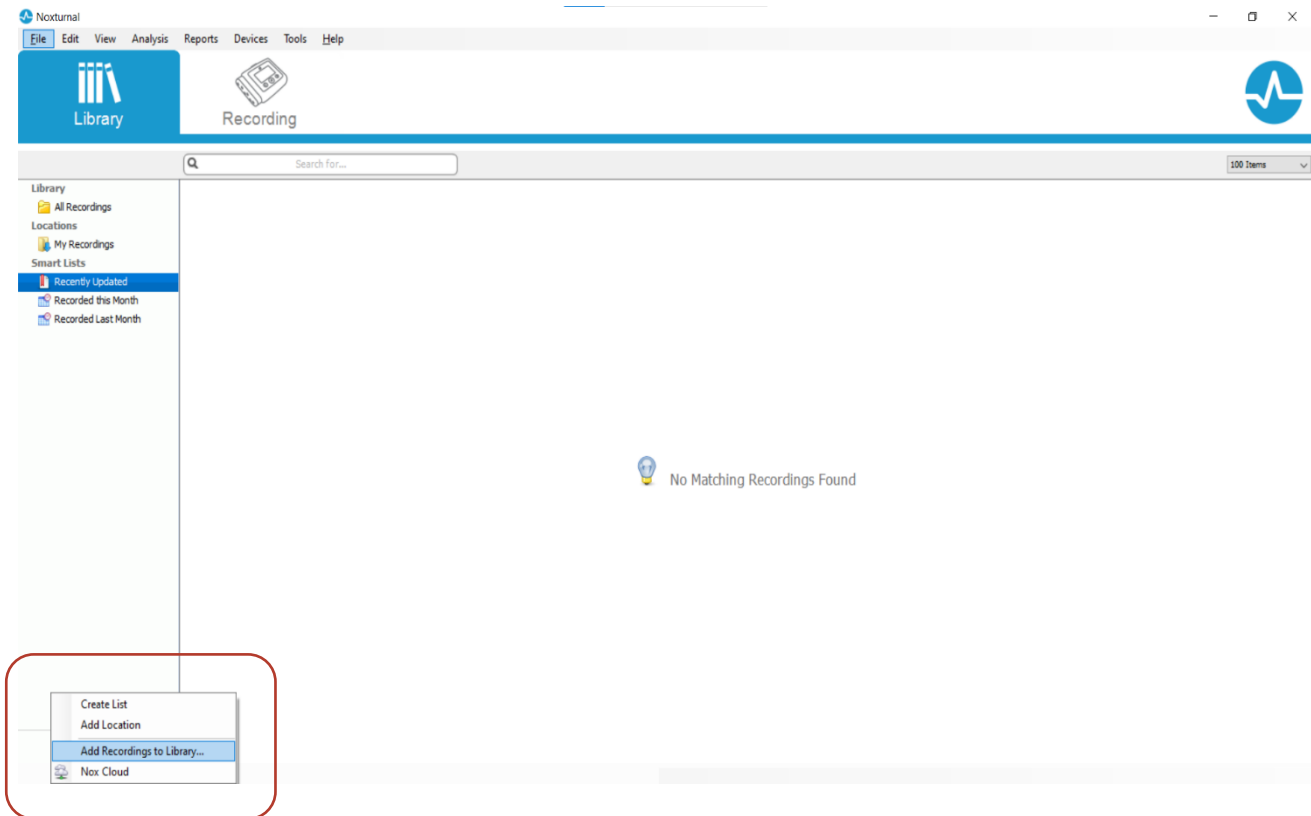
Allow plenty of time for download, with high resolution video within the file this may take several minutes. Select show in folder once download has completed.

Right click on the downloaded Zip folder and extract all files into a temporary known location.

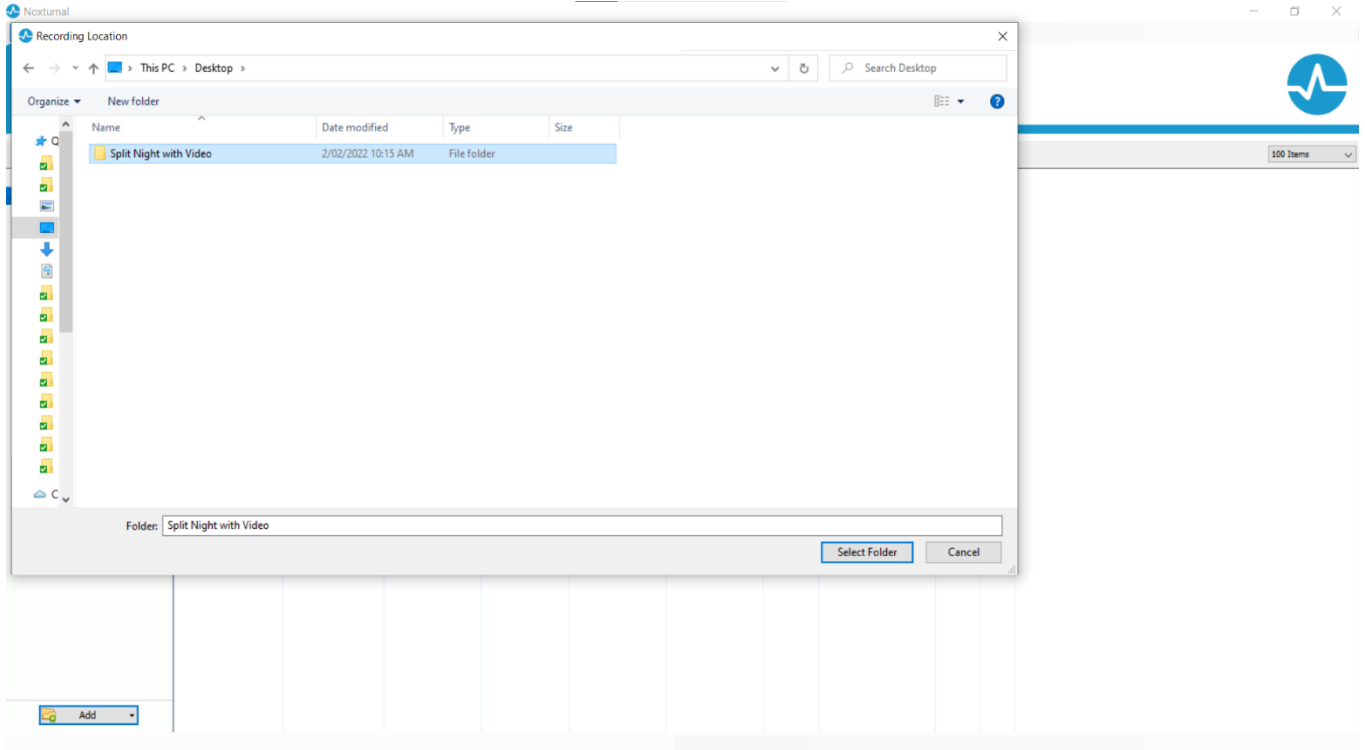
3. Install Sample Study

Once you have the Sample Study “Split Night with Video” folder available. Open Noxturnal and select the Library Tab at the top.

Click on the Add Tab in the bottom left of the screen and select “Add Recordings to Library”



Find the Sample Study “Split Night with Video” folder you downloaded and Select Folder.



The sample study will now be available in your Library. Double click on it to open.



4. Navigation

For more information on how to navigate through the sample study in Noxturnal and other Nox resources. Please refer to the Temple Healthcare Website > Product > Nox > How To Videos <https://www.templehealthcare.com.au/sentec-tcpco2-monitoring/nox-medical-sleep-diagnostics/nox-medical-how-to-videos/> or contact your local Temple Healthcare representative if required.

Note: the navigation video is using an older version of Noxturnal, and some visuals may look different.